

# LDA/DME RWY 25

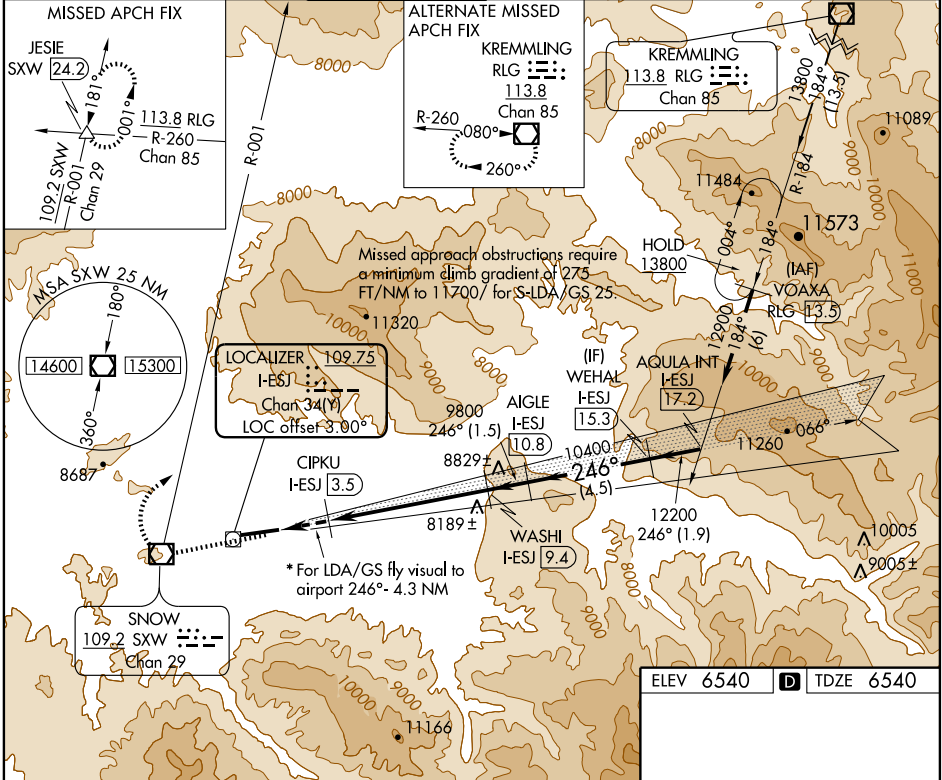
EAGLE COUNTY RGNL (EGE)

LOC/DME I-ESJ <b>109.75</b> Chan <b>34(Y)</b>	APP CRS <b>246°</b>	Rwy Idg TDZE Apt Elev <b>8000</b> <b>6540</b> <b>6540</b>
---	------------------------	--

**▼** Inoperative table does not apply.  
**▲** At night increase LDA/GS visibility to 5 miles.  
 \* Fly visual to airport authorized during day only.

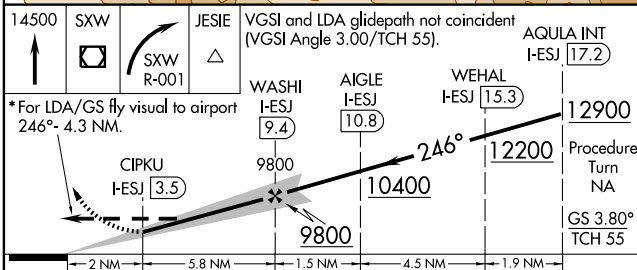
**MALS R**  
**MISSED APPROACH:** Climb to 14500 direct SWX  
 VOR/DME and climbing right turn via SWX R-001  
 to JESIE INT/SWX 24.2 DME and hold.

ATIS <b>135.575</b>	DENVER CENTER <b>128.65 282.2</b>	EAGLE TOWER * <b>119.8 (CTAF)</b>	GND CON <b>121.8</b>	CLNC DEL <b>124.75</b>	DENVER CLNC DEL <b>124.75</b> (When tower closed)
------------------------	--------------------------------------	--------------------------------------	-------------------------	---------------------------	---

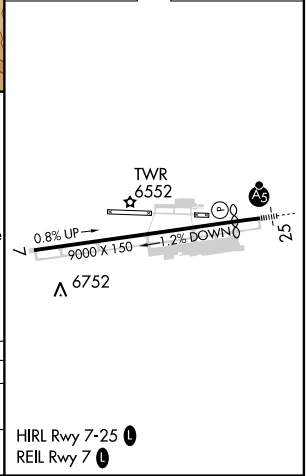


SW-1, 15 NOV 2012 to 13 DEC 2012

SW-1, 15 NOV 2012 to 13 DEC 2012



ELEV 6540	<b>D</b> TDZE 6540
-----------	--------------------



CATEGORY	A	B	C	D
S-LDA/GS 25	8330-3 1790 (1800-3)			NA
S-LDA 25	8620-2½ 2080 (2100-2½)		8620-3 2080 (2100-3)	NA